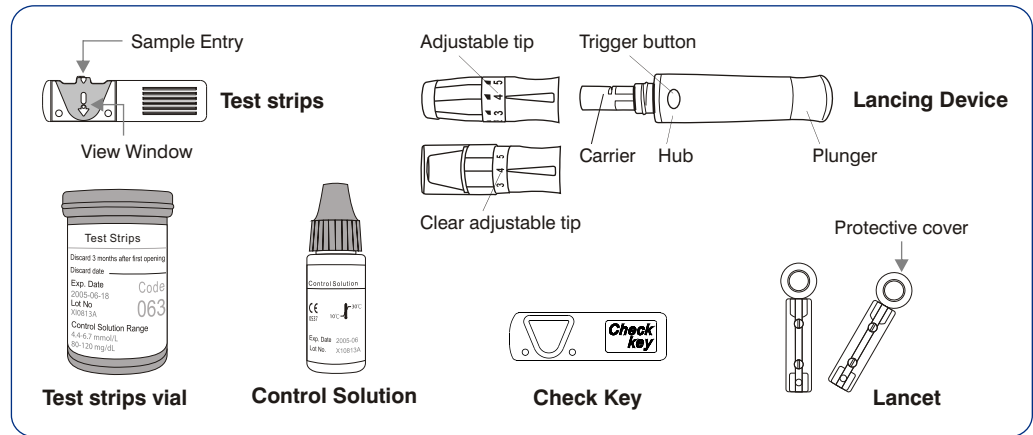
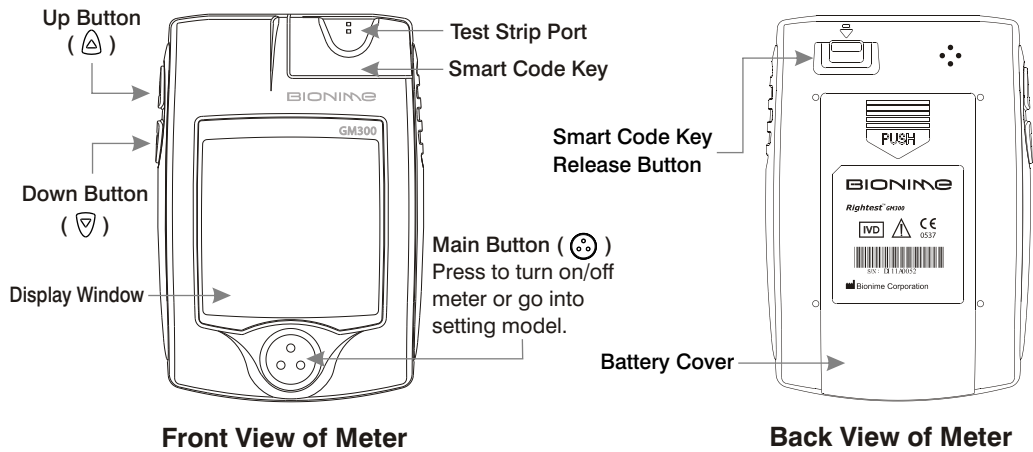
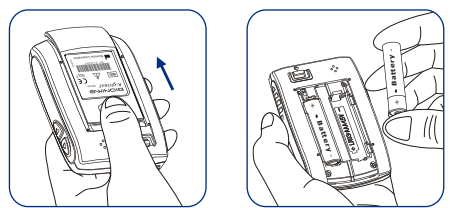


Rightest™ GETTING STARTED GUIDE (For self-testing)



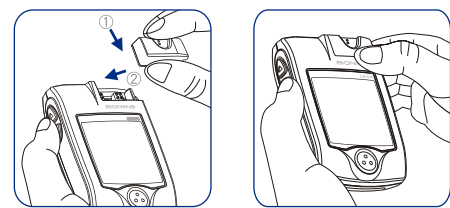
1 Batteries Installation

Turn the meter over. Press and push battery cover to open. Install both batteries at once. Be sure to put battery in correct direction.



2 Smart Code Key Installation

- 1) With the Meter off, follow ① and ② direction to put the new Smart Code Key into the track on code key base.
- 2) Push down the Smart Code Key until it snaps into the Smart Code Key base.

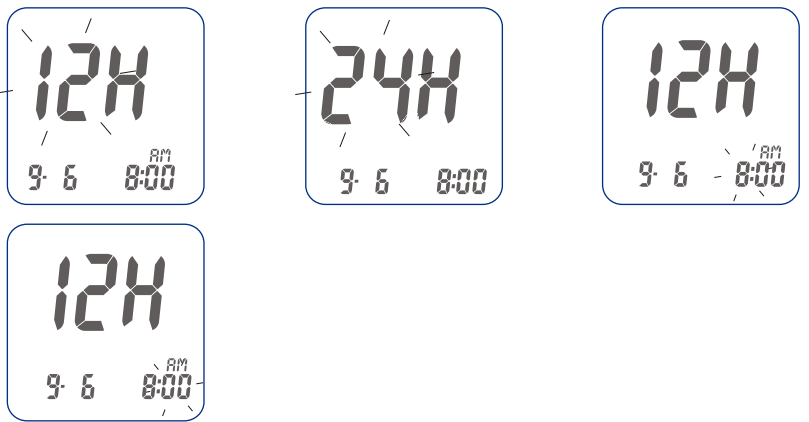


3 Setting Up Your Meter - Setting the Date, Time and Unit

- 1) Press and release main button "☺" to turn on the Meter.
- 2) Press and hold main button "☺" for five seconds until you go into the setting mode. Before you go into setting mode, you will see power off first. Please keep pressing it until you go into the setting mode. The year will flash.
- 3) Press up button "△" or down button "▽" to change the year.
- 4) Press main button "☺" to confirm the year and move to month setting.

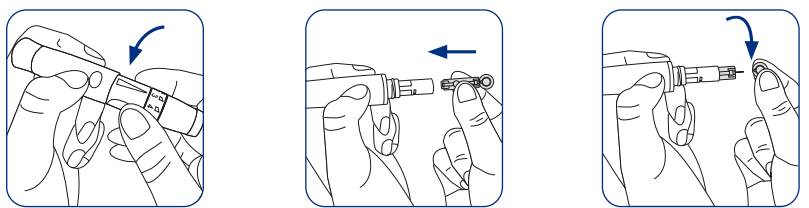


- 5) Repeat steps 3 and 4 to change the date, time format, hour, and minute. After pressing the main button to confirm the minute unit, your set-up has been finished.

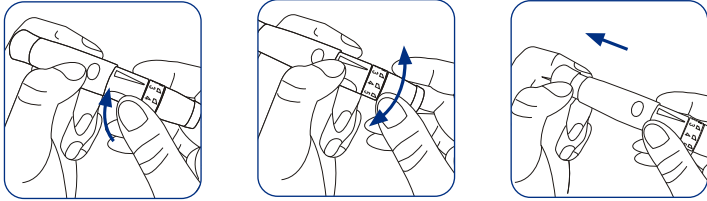


4 Preparing the Lancing Device

- 1) Unscrew the head of lancing device.
- 2) Load a lancet into the lancing device.
- 3) Twist off the protective cover of lancet and keep it (You will need it after testing).

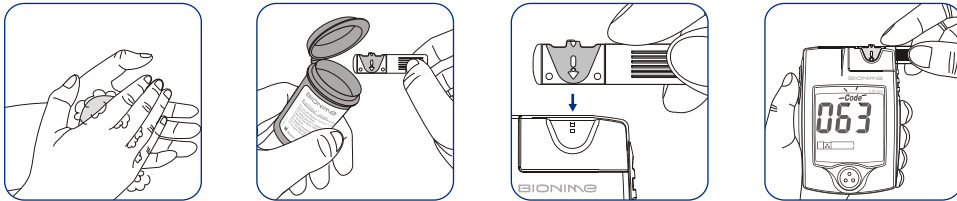


- 4) Screw back the head of lancing device.
- 5) Twist the comfort dial (depth selection) of lancing device to select the lancet depth. Start at 2 or 3. For tougher skin, dial to a higher number.
- 6) Pull the plunger of lancing device until the end and release your hand. Your lancing device is ready. Then set it aside; you will need it in the next step.

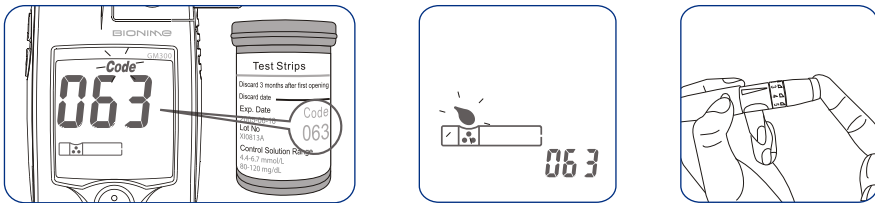


5 Performing a Test

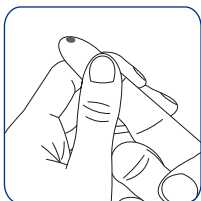
- 1) Wash and dry your hands. Take one strip from the vial. Close the vial cap immediately.
- 2) Insert the strip into the strip port on meter with the indication symbol facing up. Push the strip in until it snaps and stops. The meter will turn on automatically.



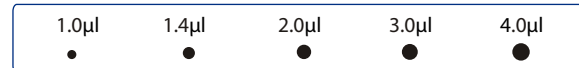
- 3) Make sure the code number on the meter screen matches the code number on the test strip vial.
- 4) When you see the flashing blood drop, hold the lancing device to side of your fingertip and press the release button.



- 5) Gently squeeze your fingertip to get a drop of blood. Our Meter only needs a tiny blood sample. We suggest to get a blood sample size around 1.4~2.5µl to test it. Please don't squeeze too much blood. Too much blood might contaminate the Smart Code Key.



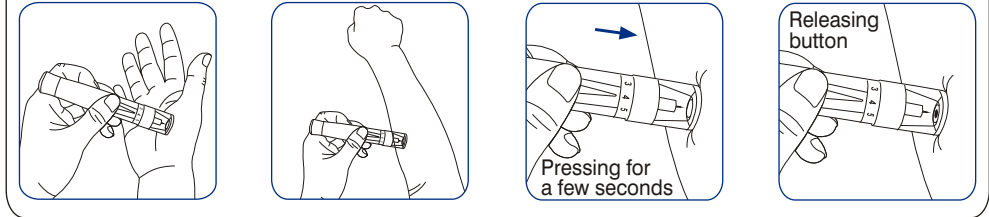
Sample Size Example



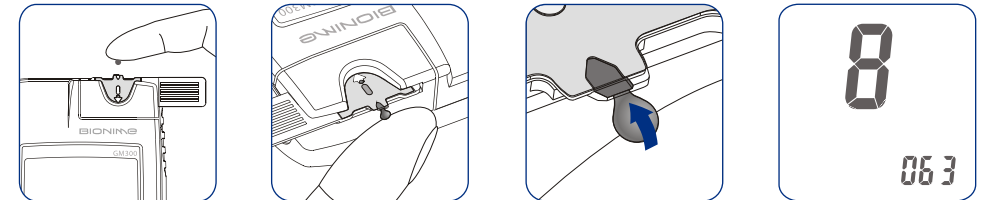
We suggest you to take 1.4~2.5µl to do the test on glucose monitoring system. Blood sample size above 4.0µl is too much which will contaminate the Smart Code Key.

Alternative site testing-palm or forearm blood sampling

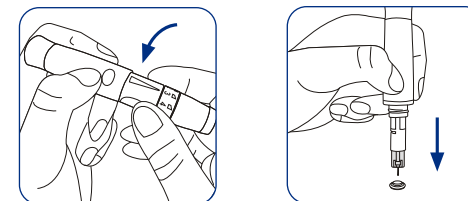
- To do the alternative site testing, please install the clear adjustable tip for your lancing device. (For detailed information of installing clear adjustable tip of lancing device, please check the instruction manual for the lancing device.)
- To increase the blood flow, please massage the puncture area of palm or forearm for a few seconds.
- Immediately after massaging the puncture area, press and hold the lancing device with the clear adjustable tip against palm or forearm.
- Then press the release button.
- Continue holding the lancing device against palm or forearm and gradually increase pressure for a few seconds until the blood sample size is sufficient. (Refer to Instruction manual for the lancing device)



- 6) Touch and hold the drop to the edge of sample entry until you hear a " beep " and the view window is totally filled with blood. If the view window is not totally filled with blood or the test does not start. Then discard the test strip and repeat the test with a new test strip.
- 7) You will see the countdown mode on the screen. After 8 seconds, the test result appears. For more information about your test results, please see your User Manual.



- 8) To remove the lancet, unscrew the head of lancing device and put the protective cover of lancet on the table. Stick the lancet into the protective cover by holding the lancing device as a pen. Then, unload the lancet and discard it into a puncture-proof container.



For more information on how to use your meter and understand your test results, please see the User Manual.

BIONIME

BIONIME CORPORATION
694, Renhua Road, Dali City,
Taichung County, Taiwan 412
Tel: 886-4-24951268 Fax: 886-4-24952568
E-mail: info@bionime.com
Website: www.bionime.com

EU Representative:
BIONIME GmbH
Heinrich Wild Strasse 202,
CH-9435 Heerbrugg,
Switzerland

CE
0537

101-3GM300-211
EN